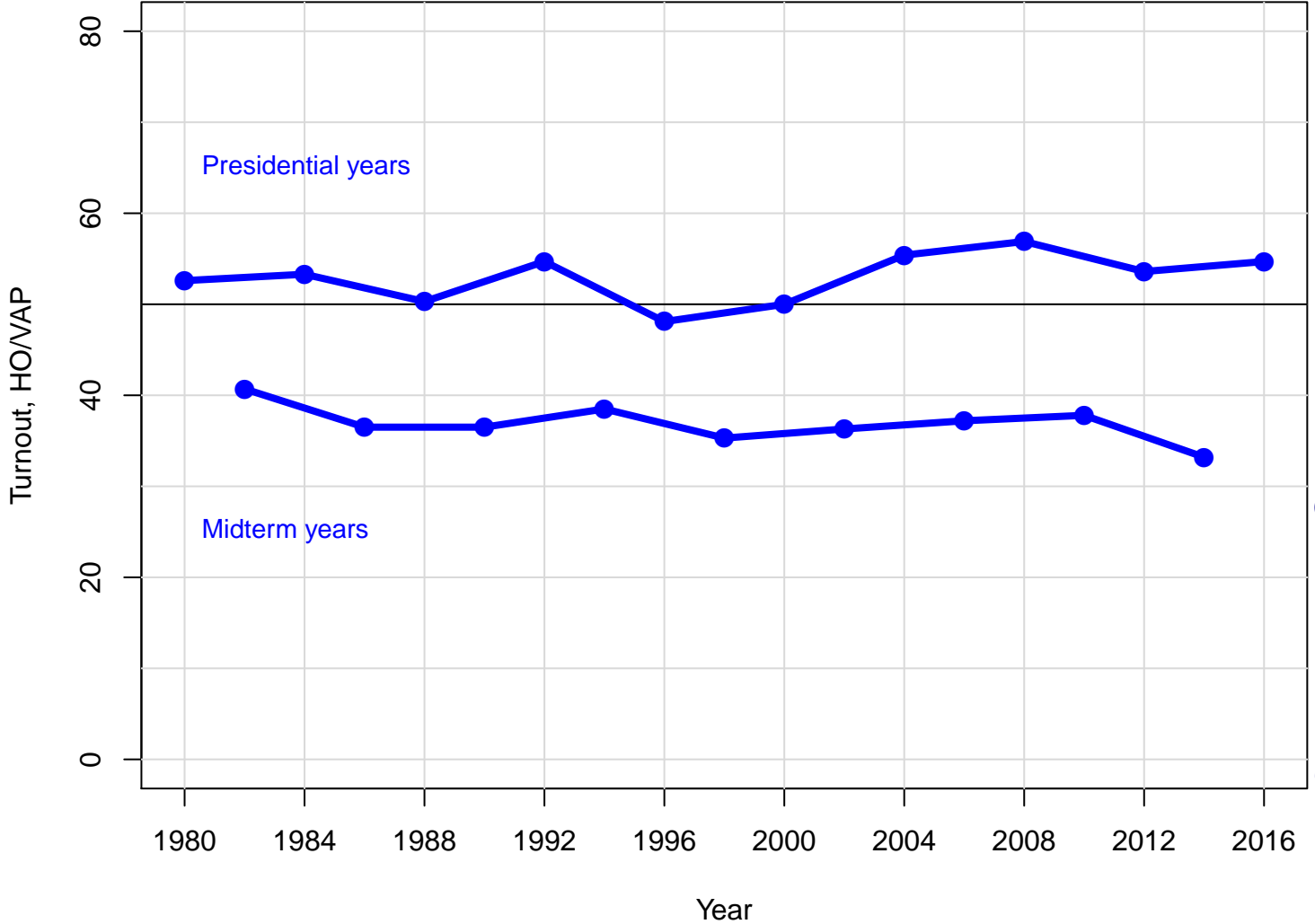


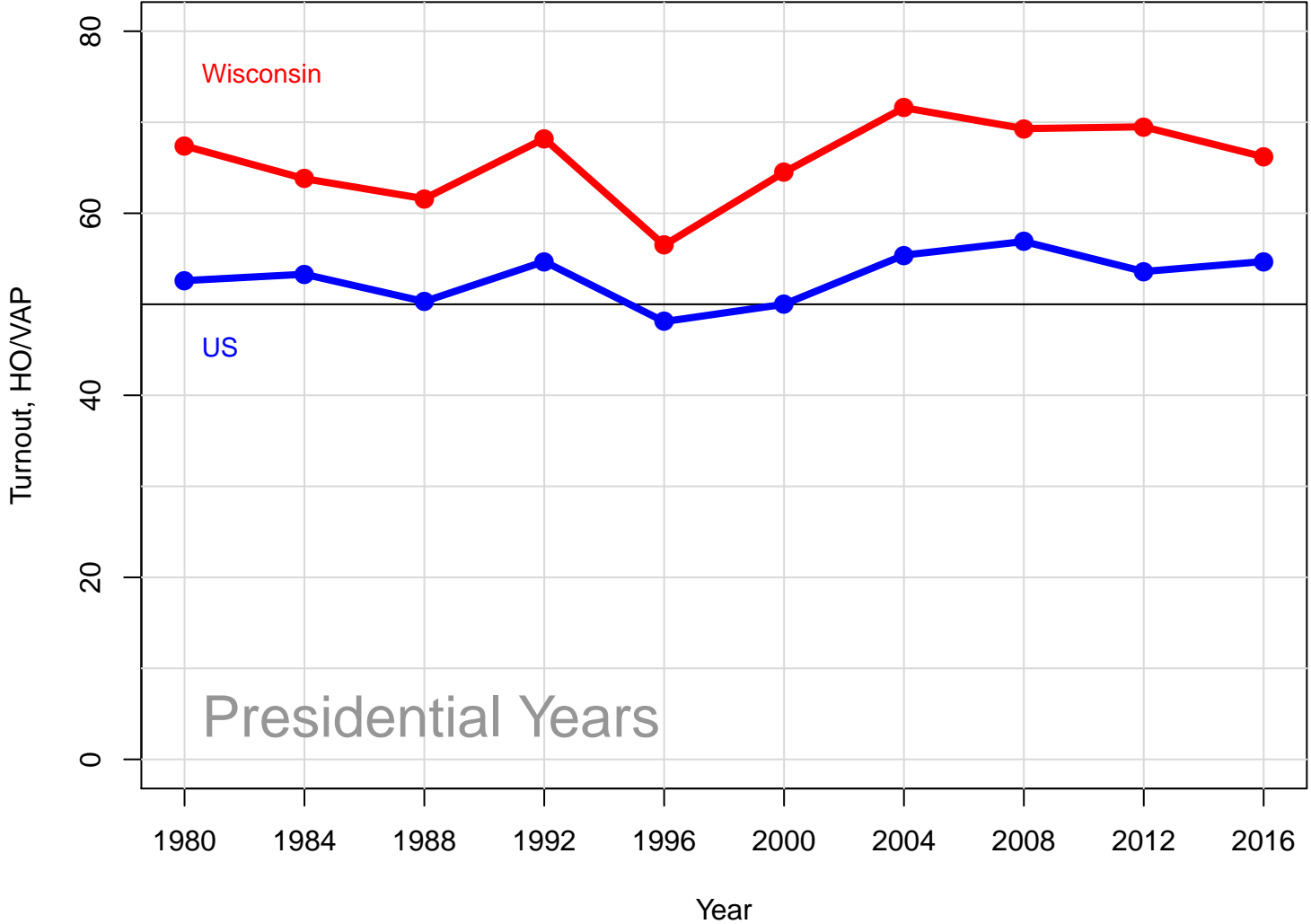
MARQUETTE UNIVERSITY
LAW SCHOOL POLL



Turnout for highest office as percent of voting age population

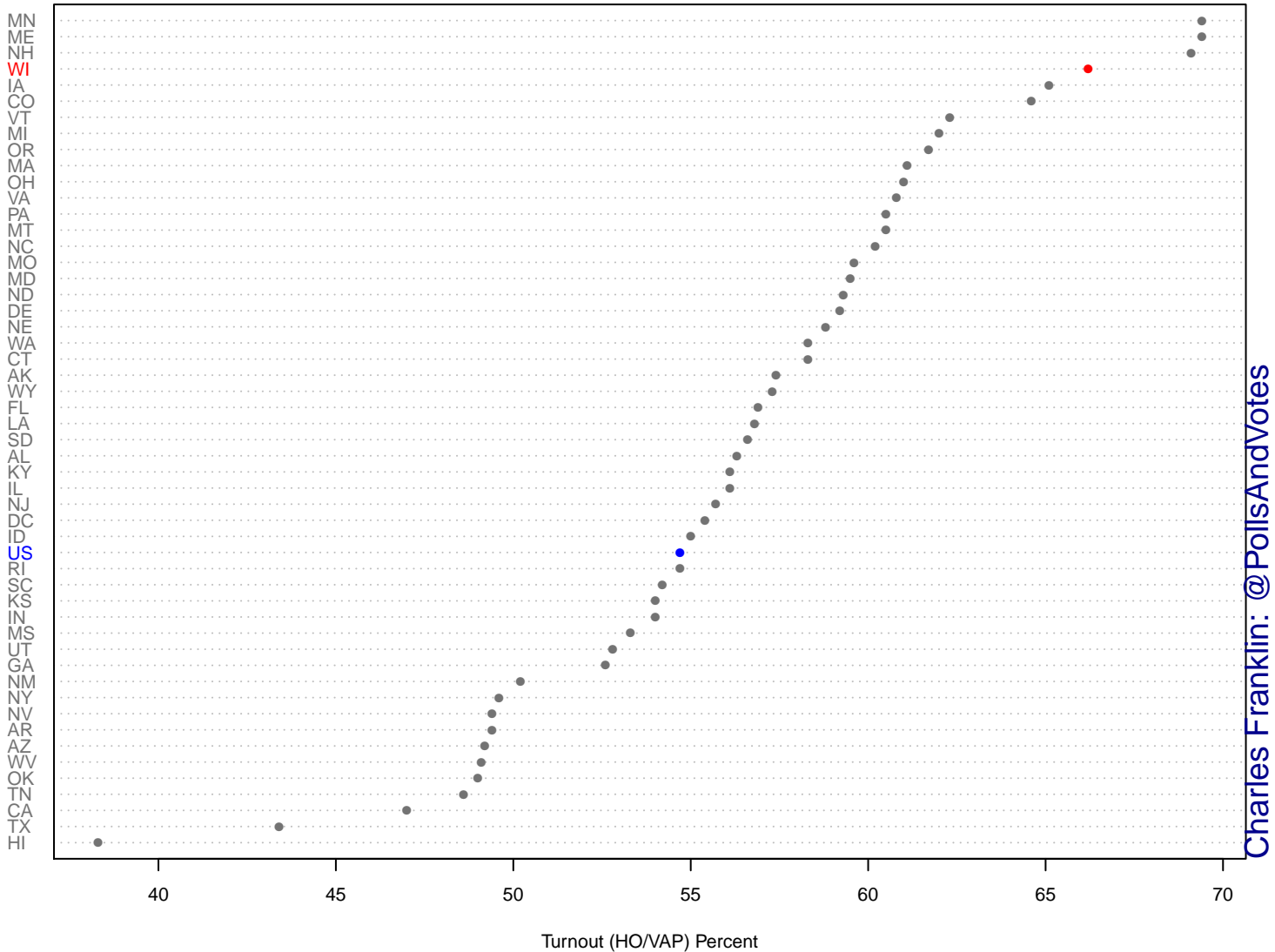


Turnout for highest office as percent of voting age population



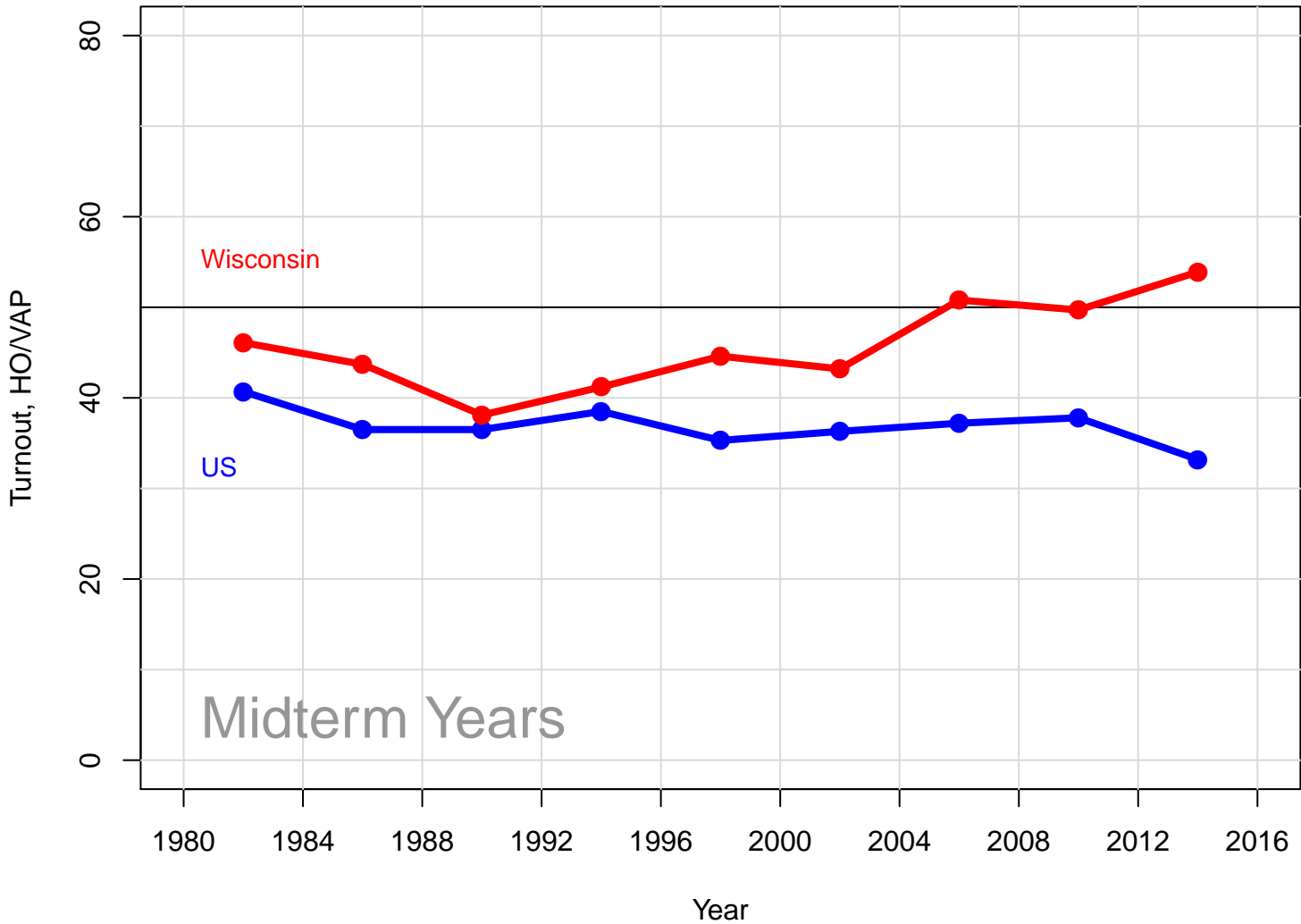
Charles Franklin: @PollsAndVotes

2016 Turnout, Highest Office/VAP

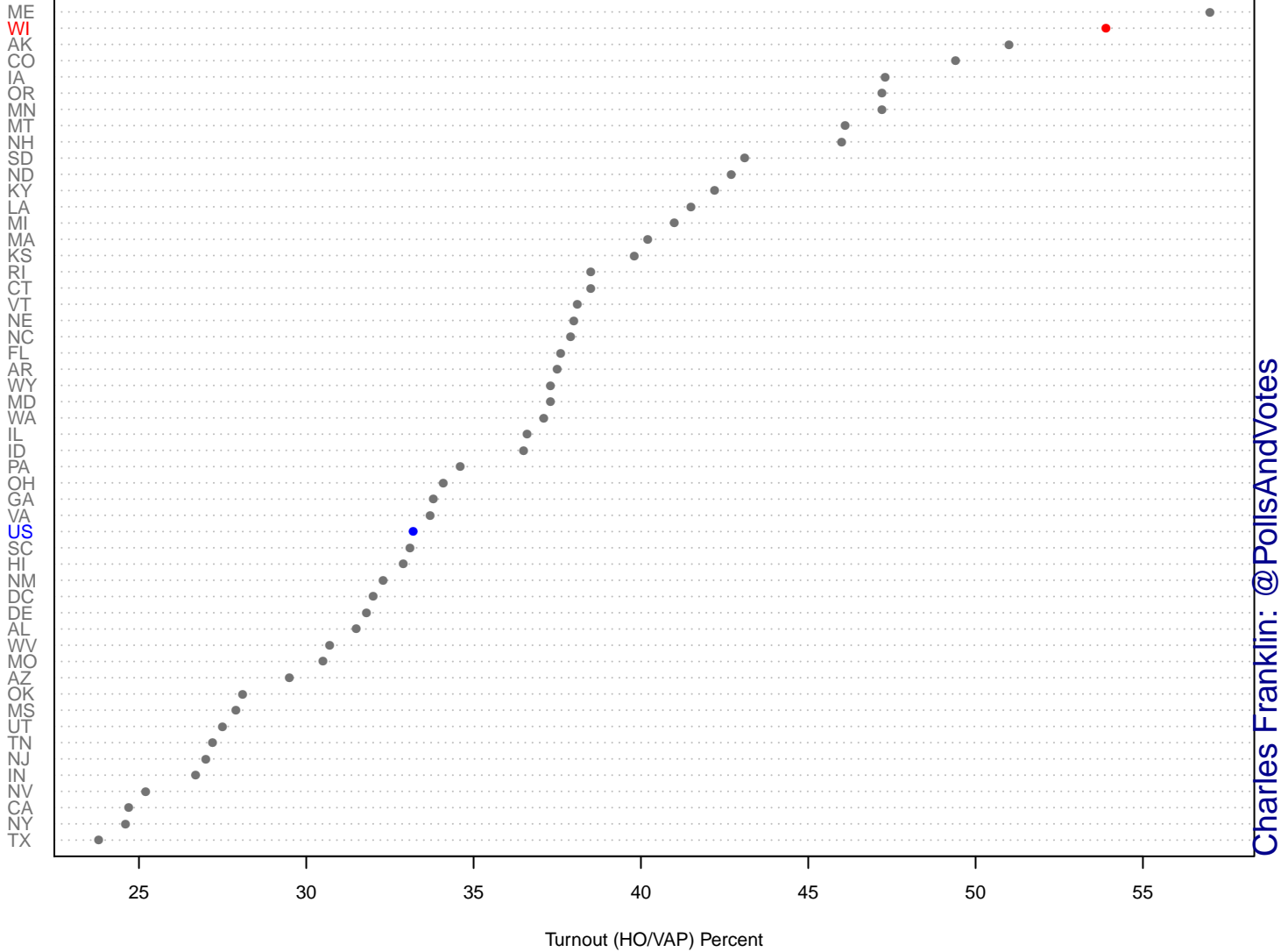


Charles Franklin: @PollsAndVotes

Turnout for highest office as percent of voting age population

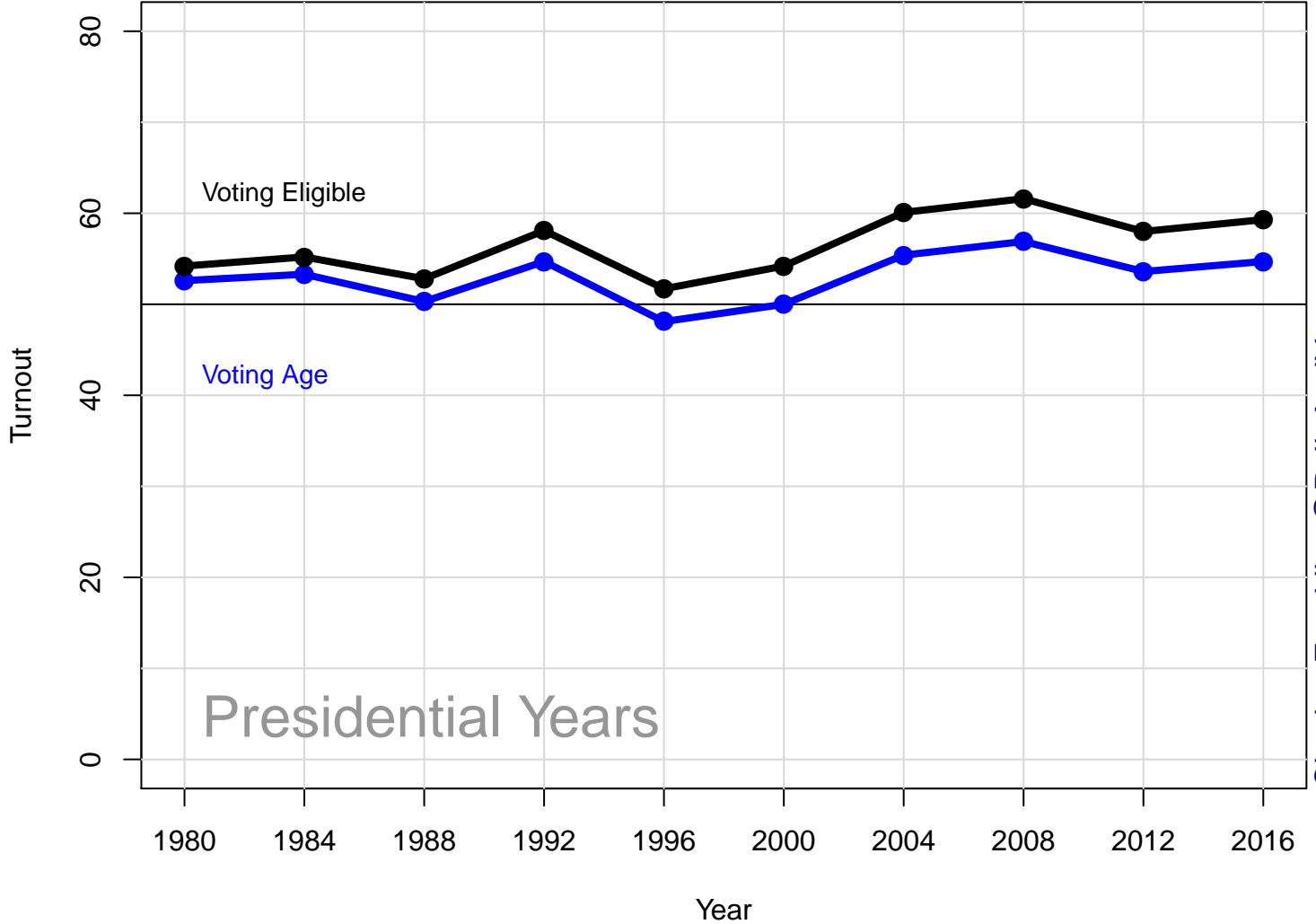


2014 Turnout, Highest Office/VAP

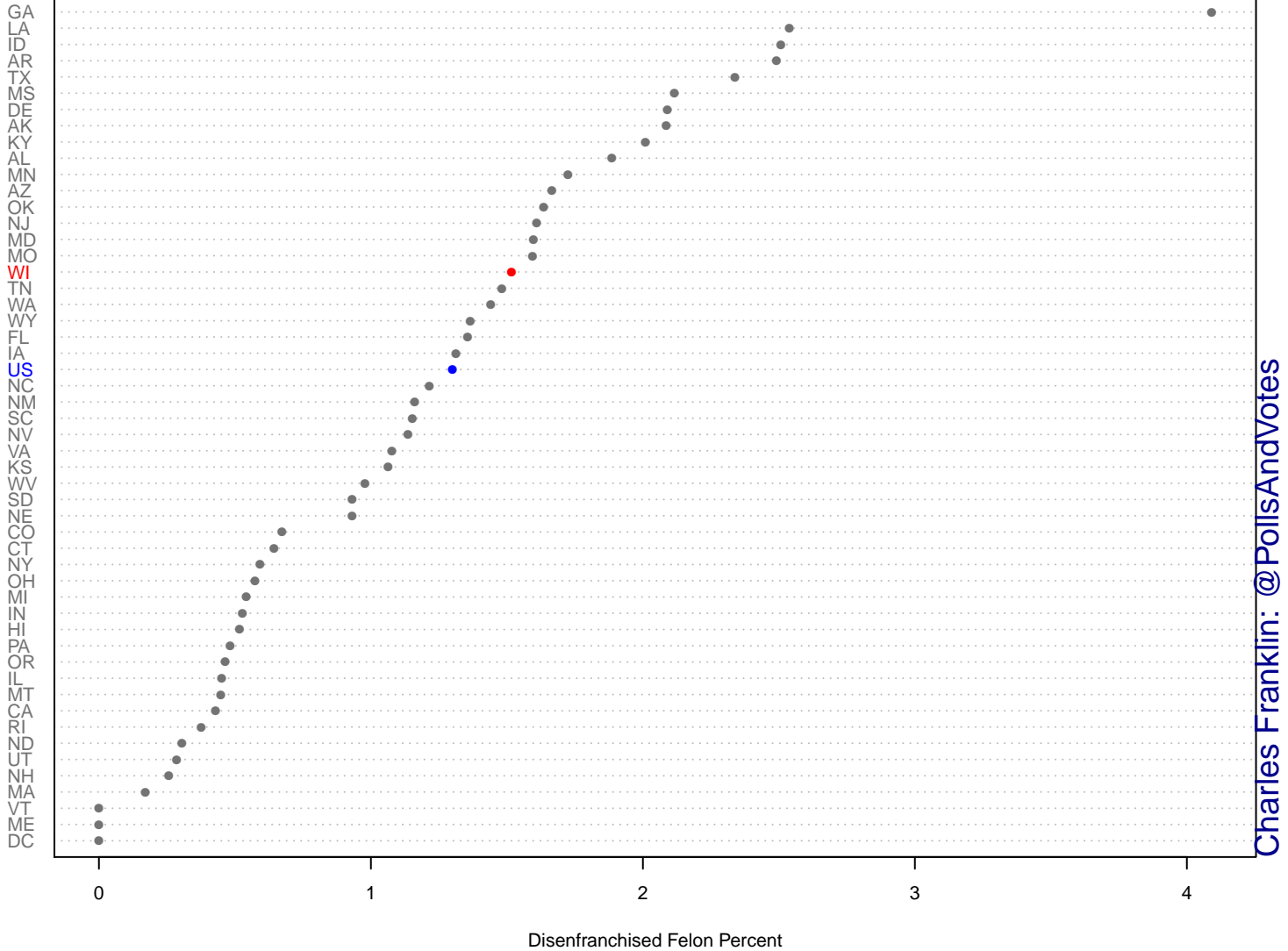


Charles Franklin: @PollsAndVotes

Voting age turnout vs voting eligible turnout

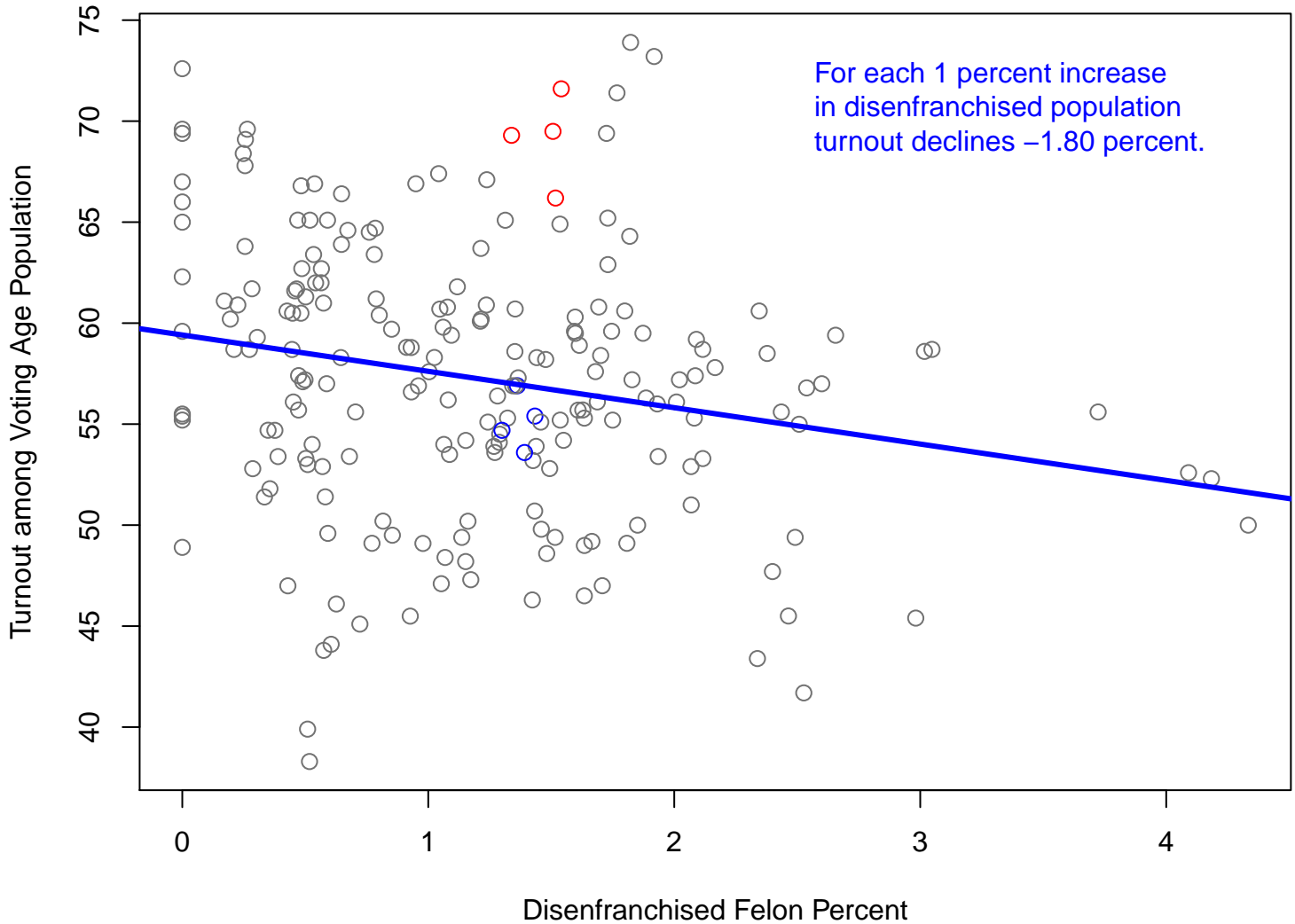


Disenfranchised Felons as percent of voting age population, 2016



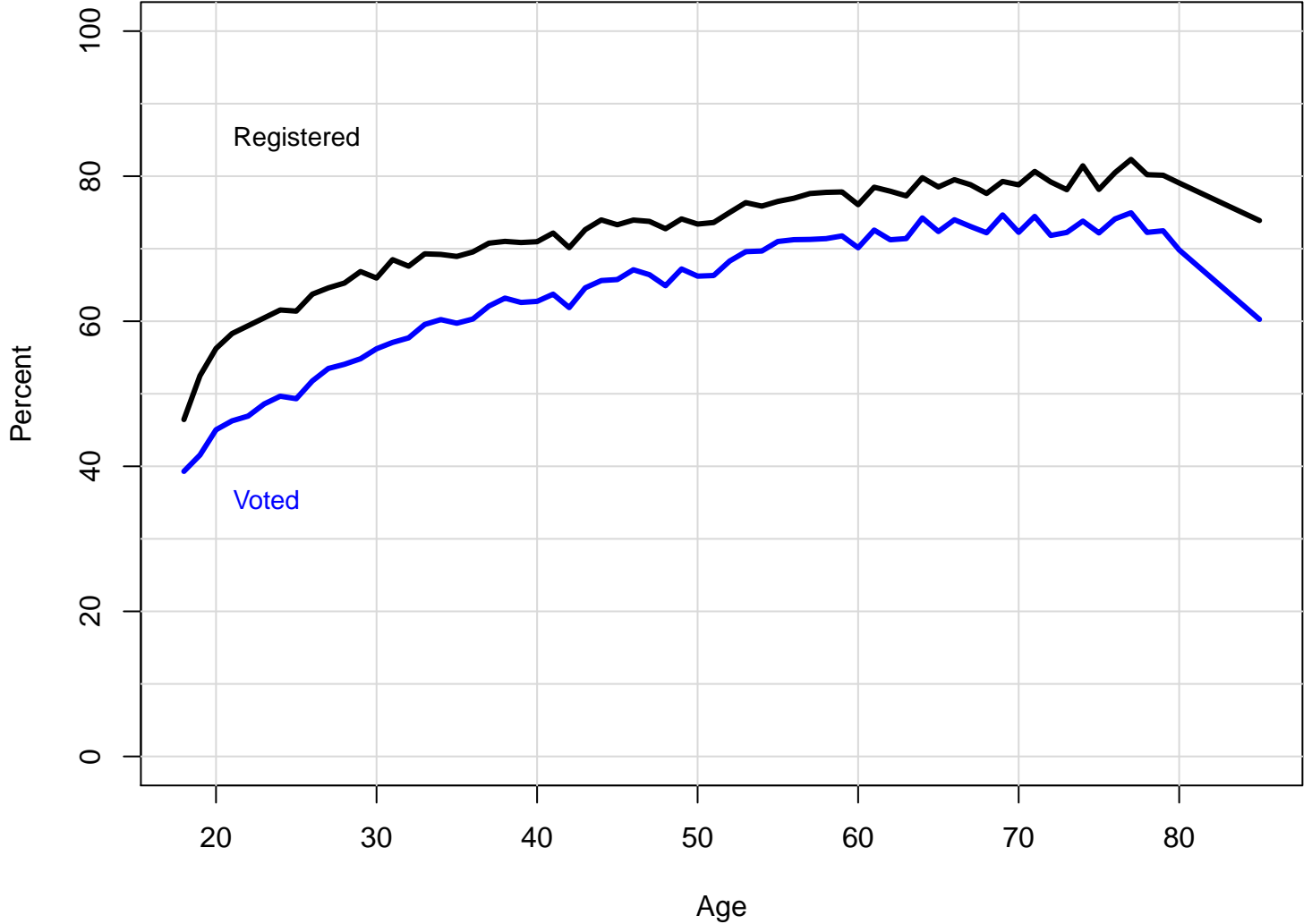
Turnout declines as more are disenfranchised

Presidential years, 2004–2016



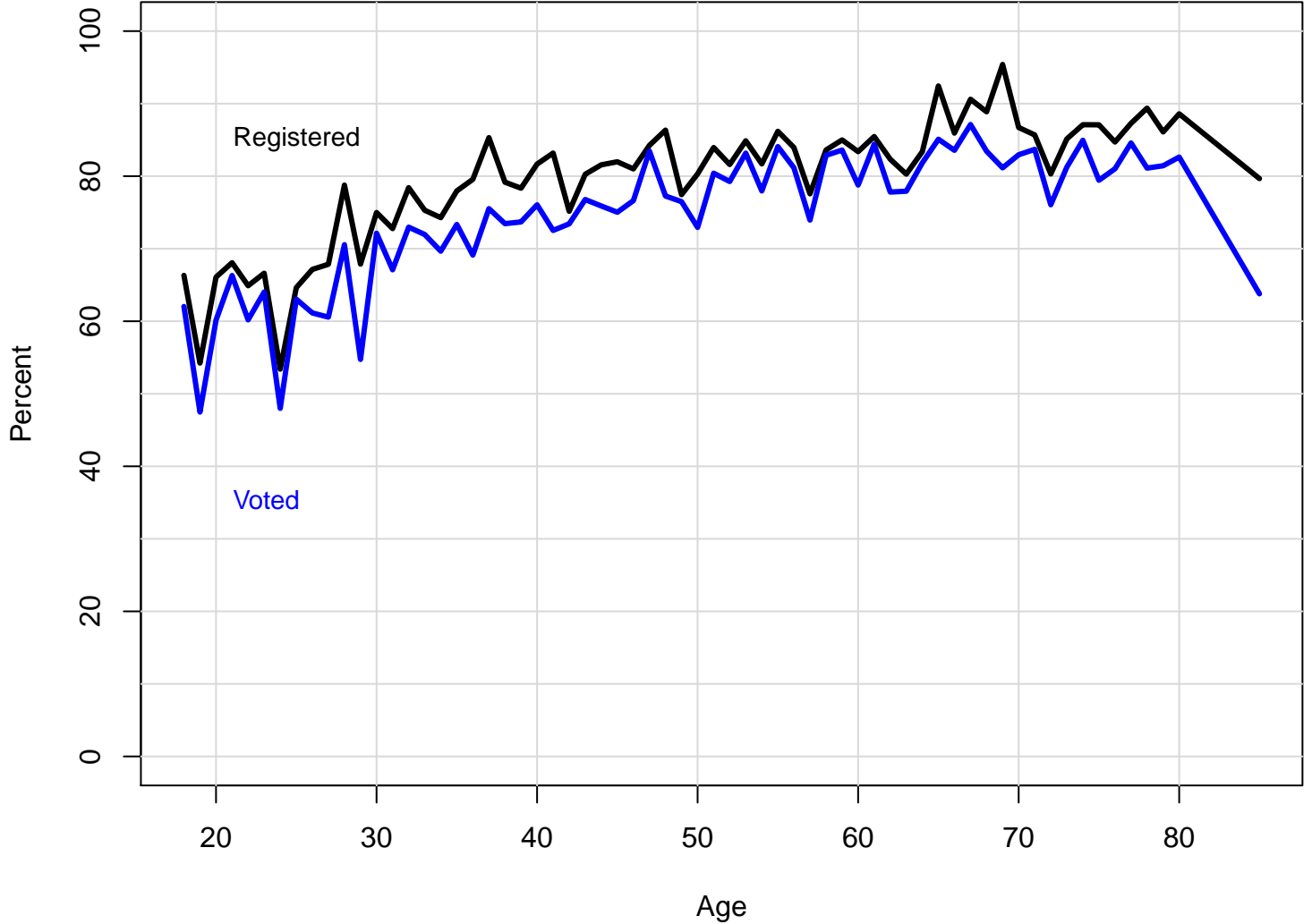
Registration & Turnout by Age, 2004–2012

National, Presidential Years



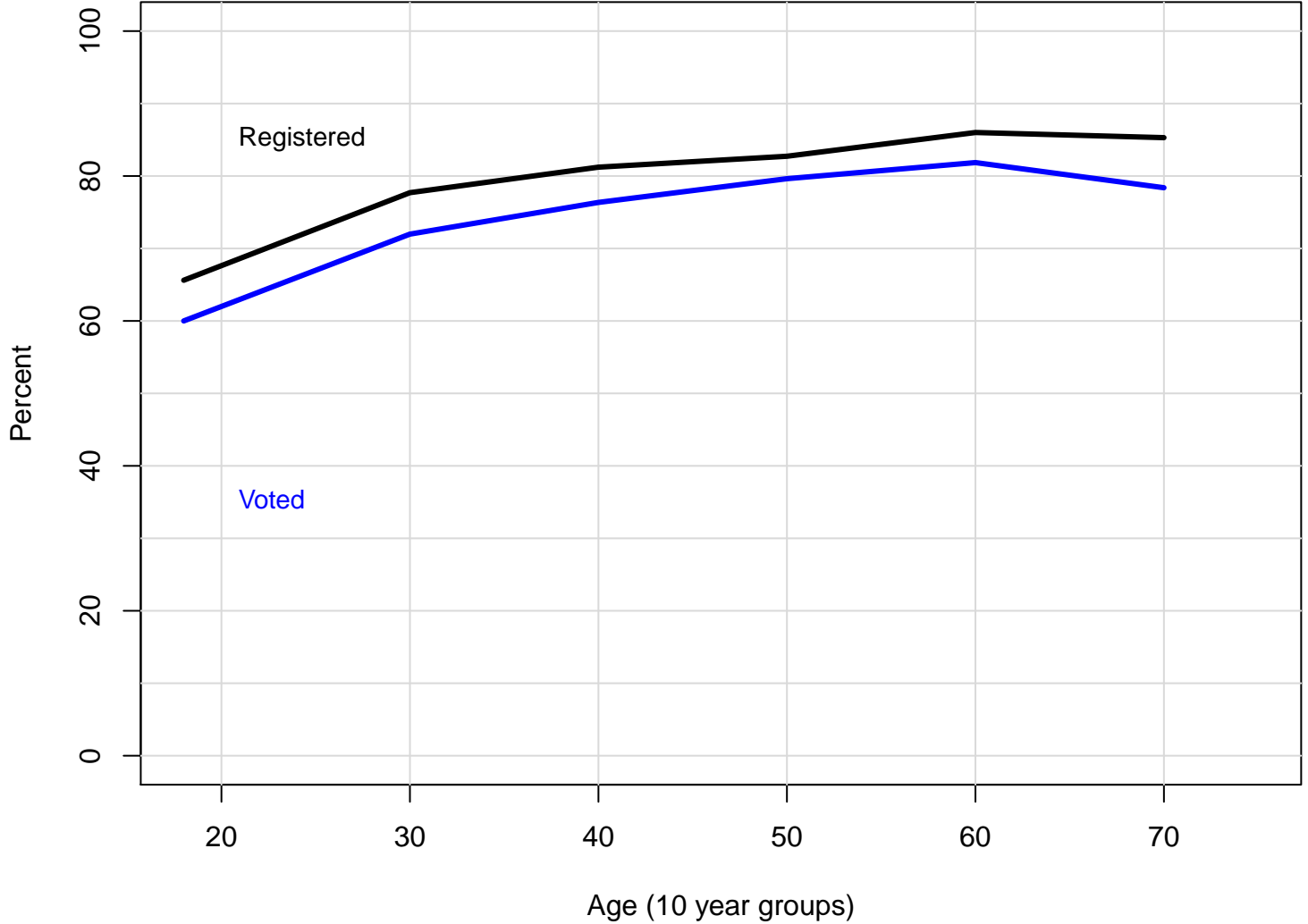
Registration & Turnout by Age, 2004–2012

Wisconsin, Presidential Years



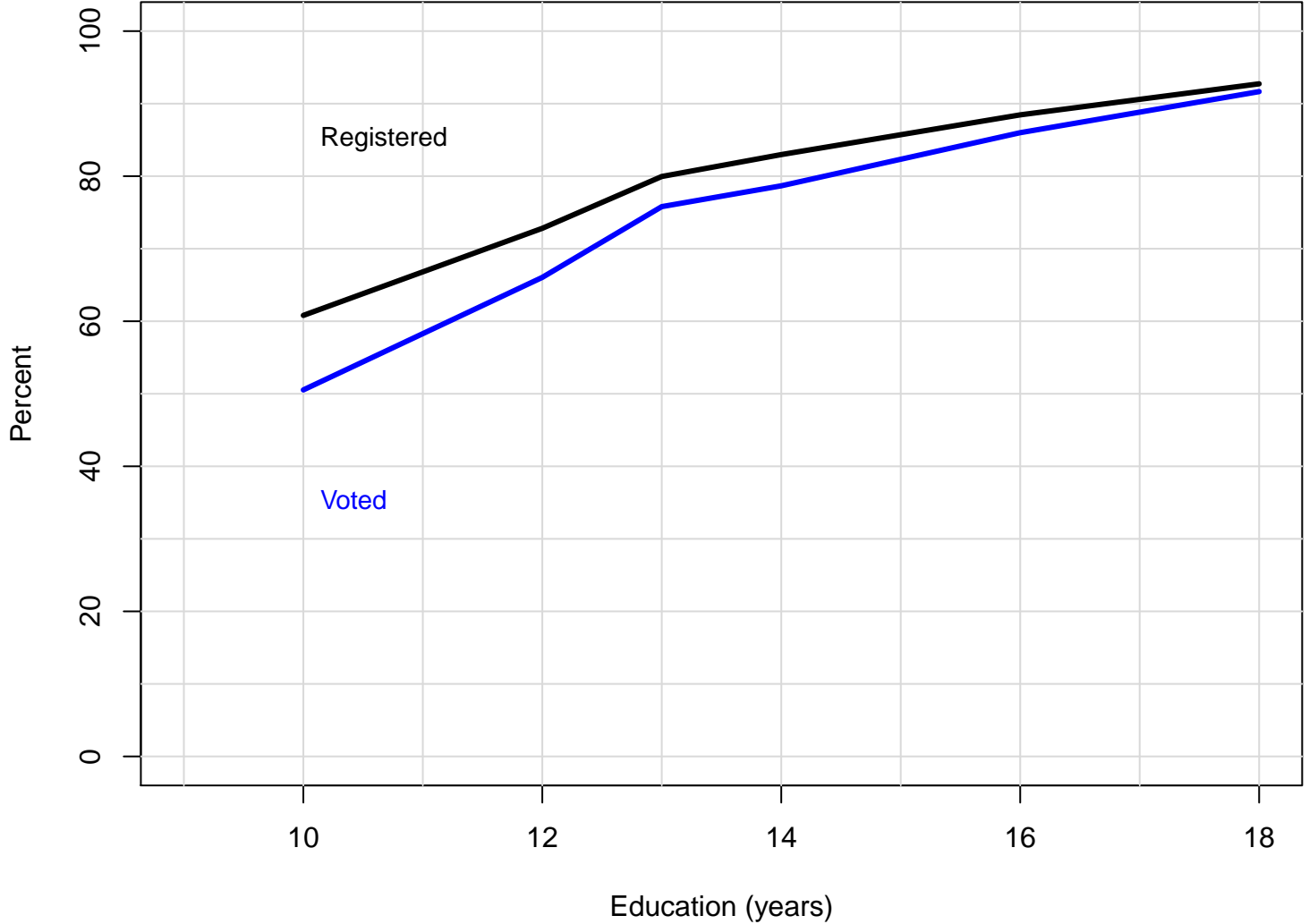
Registration & Turnout by Age, 2004–2012

Wisconsin, Presidential Years



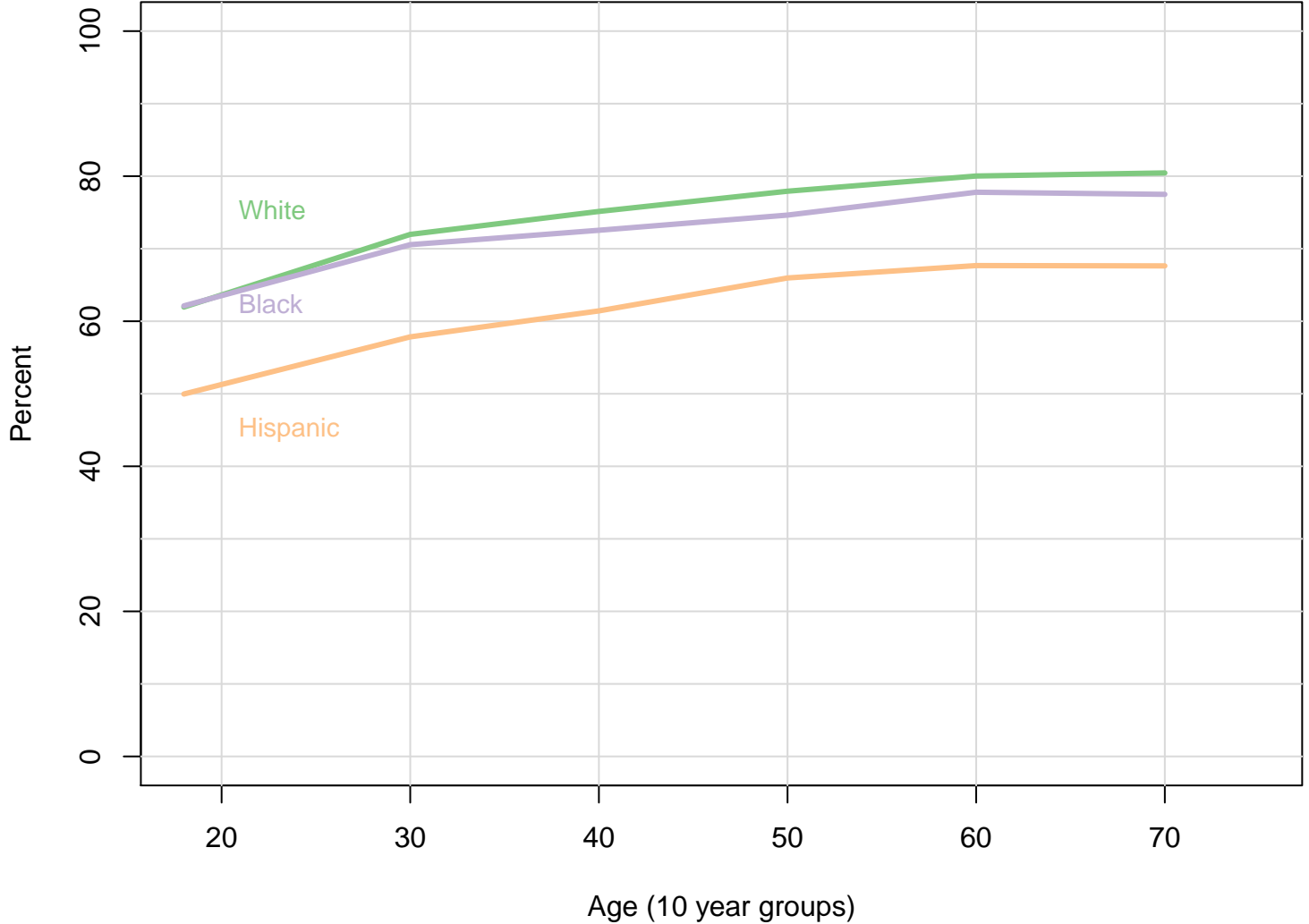
Registration & Turnout by Education, 2004–2012

Wisconsin, Presidential Years



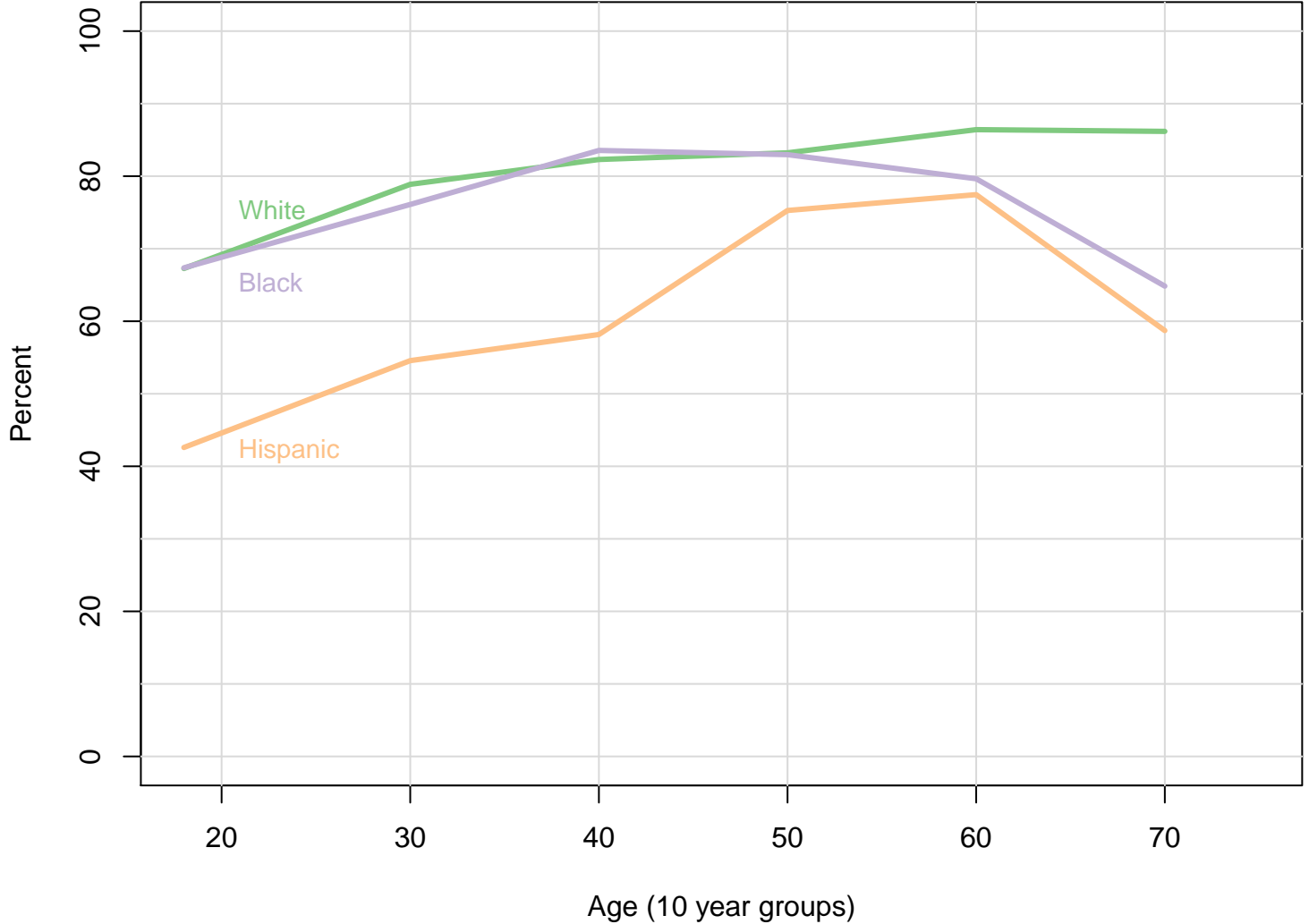
Registration by Age and Race/Ethnicity, 2004–2012

National, Presidential Years



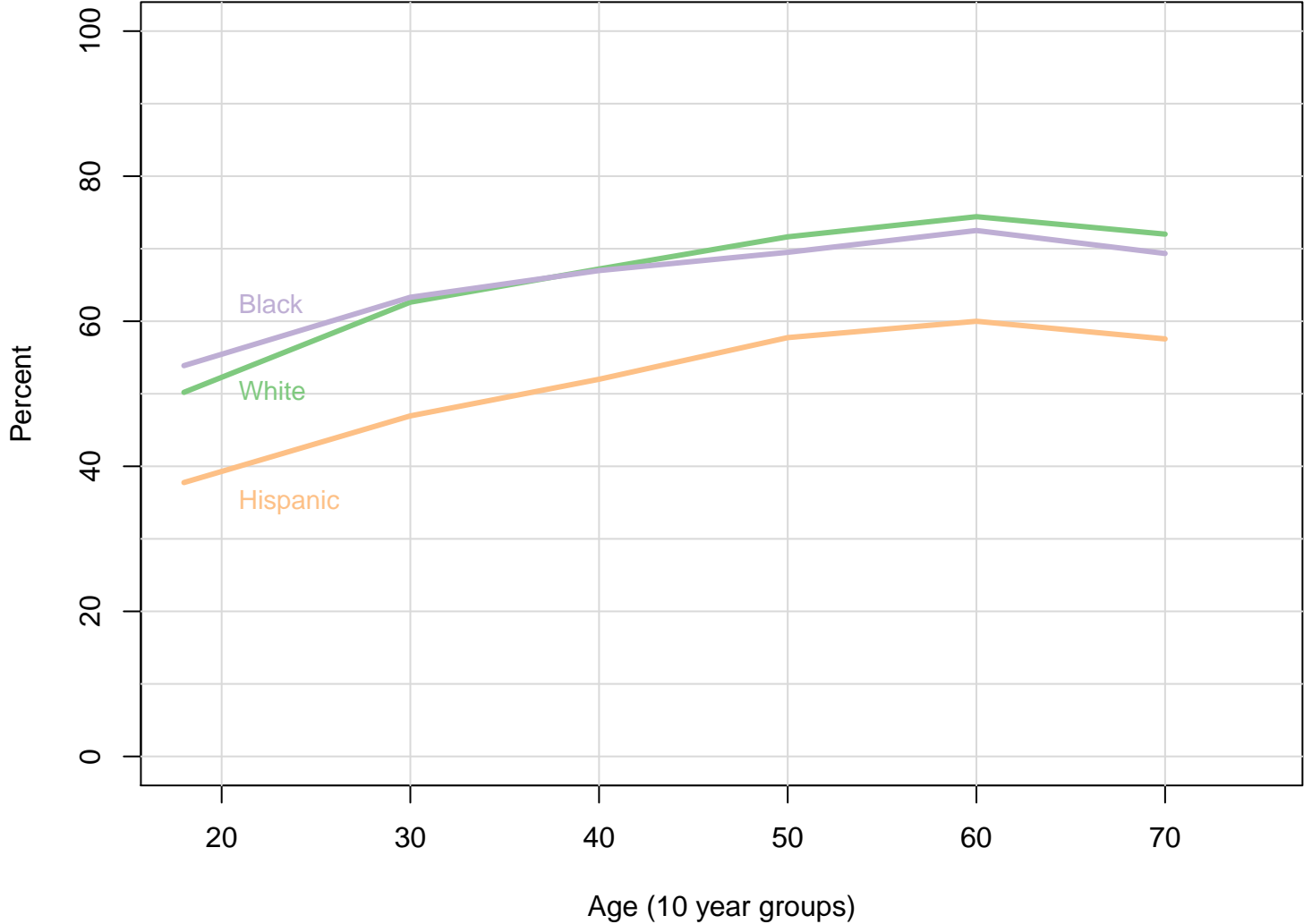
Registration by Age and Race/Ethnicity, 2004–2012

Wisconsin, Presidential Years



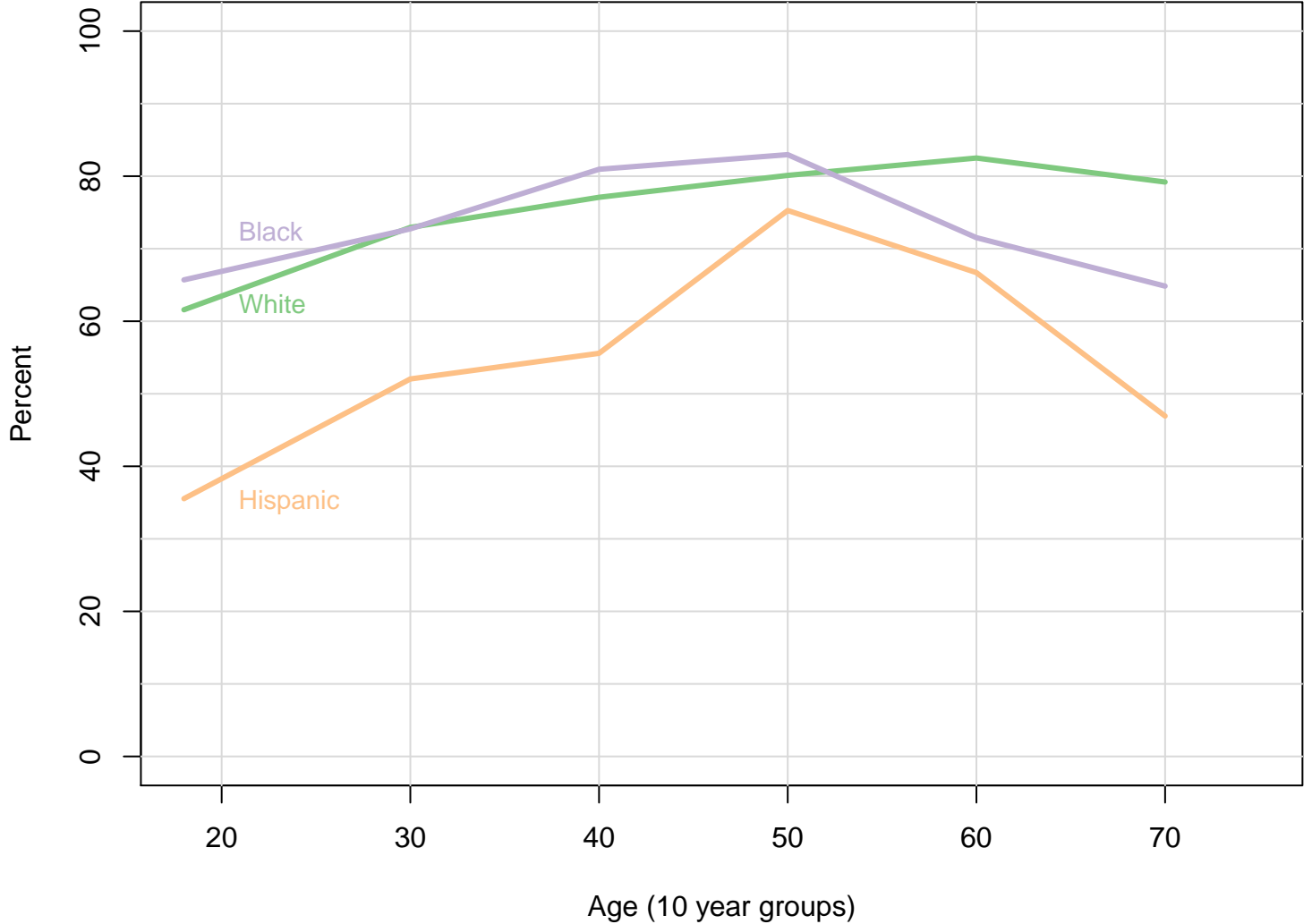
Turnout by Age and Race/Ethnicity, 2004–2012

National, Presidential Years



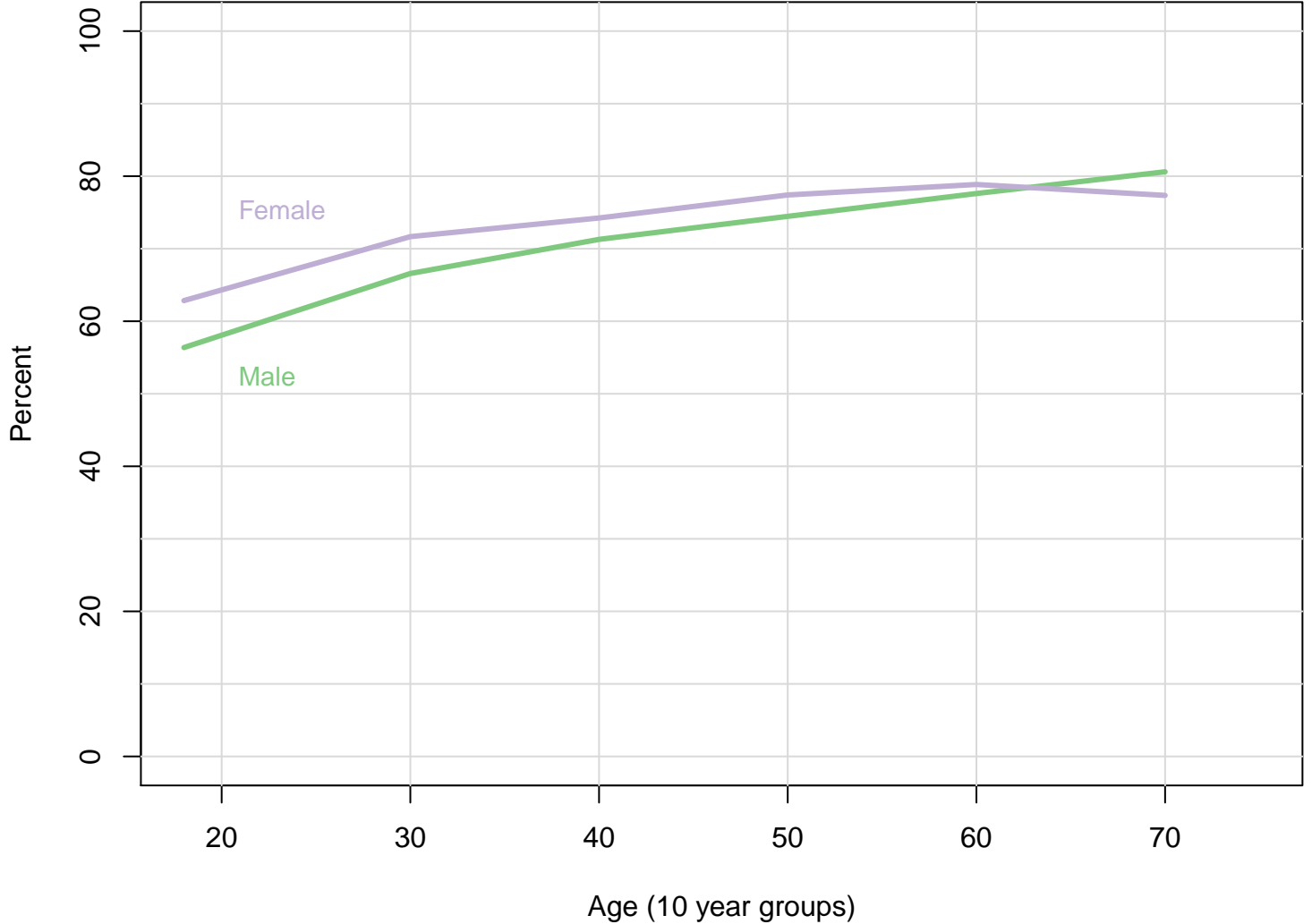
Turnout by Age and Race/Ethnicity, 2004–2012

Wisconsin, Presidential Years



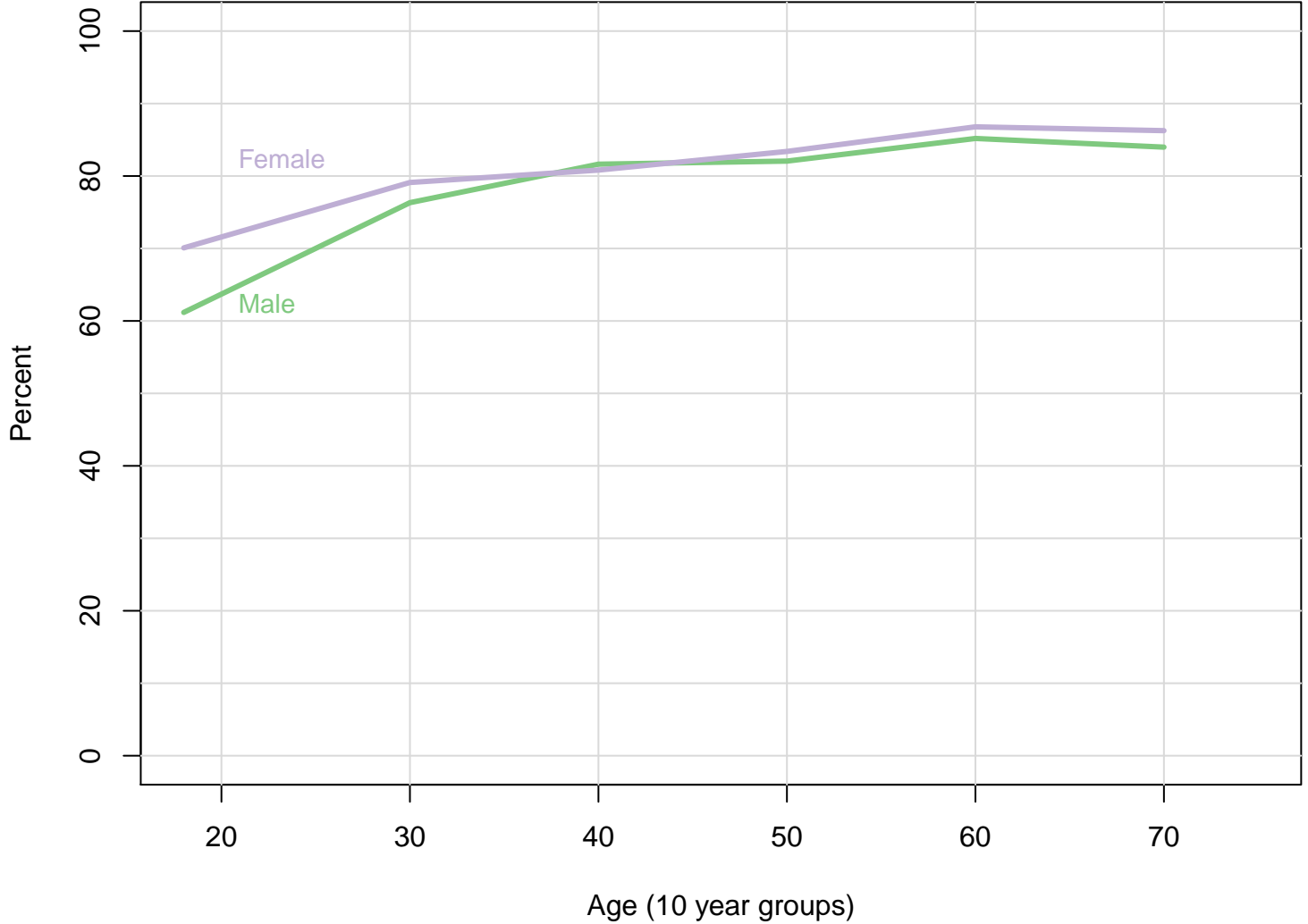
Registration by Age and Sex, 2004–2012

National, Presidential Years



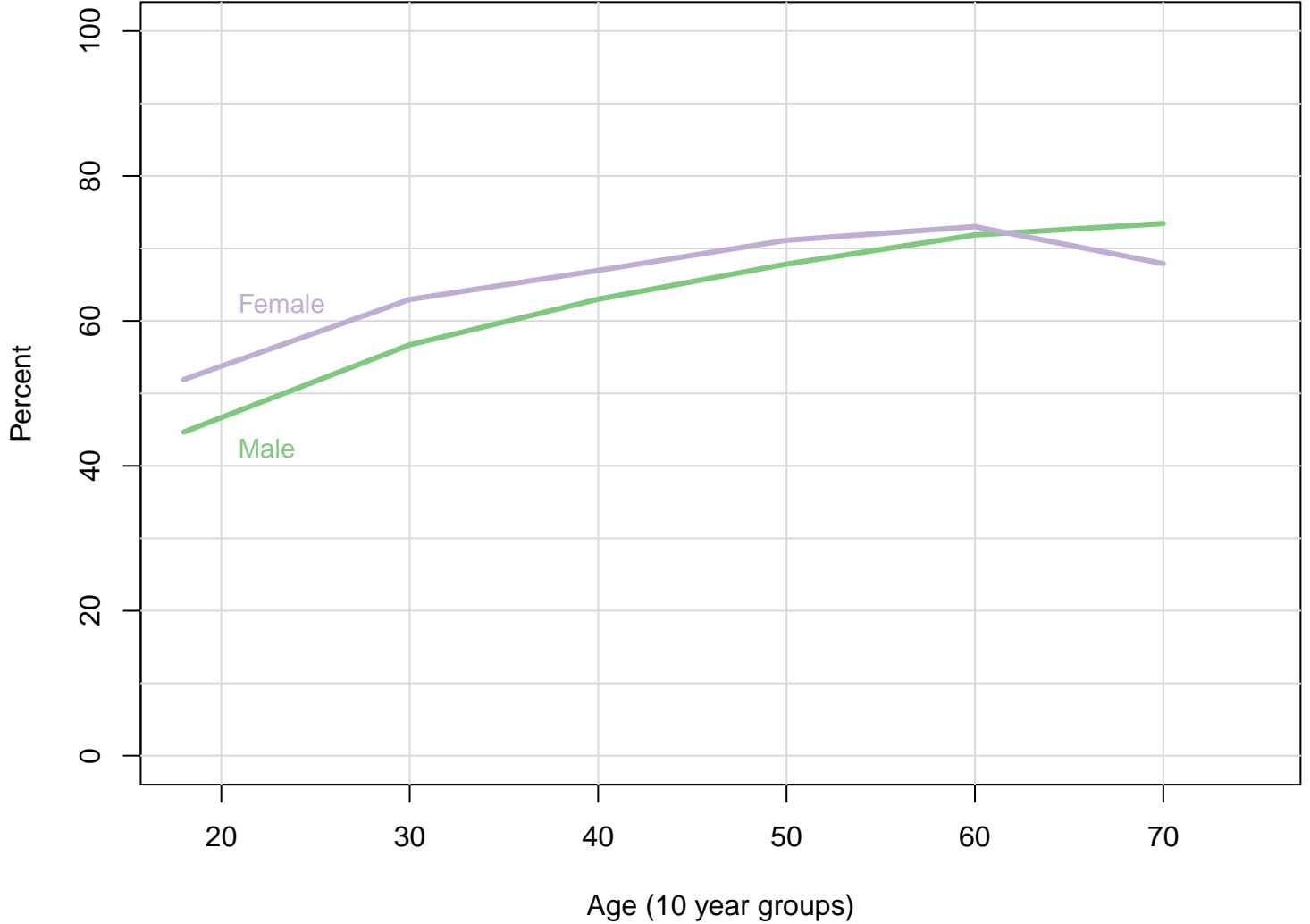
Registration by Age and Sex, 2004–2012

Wisconsin, Presidential Years



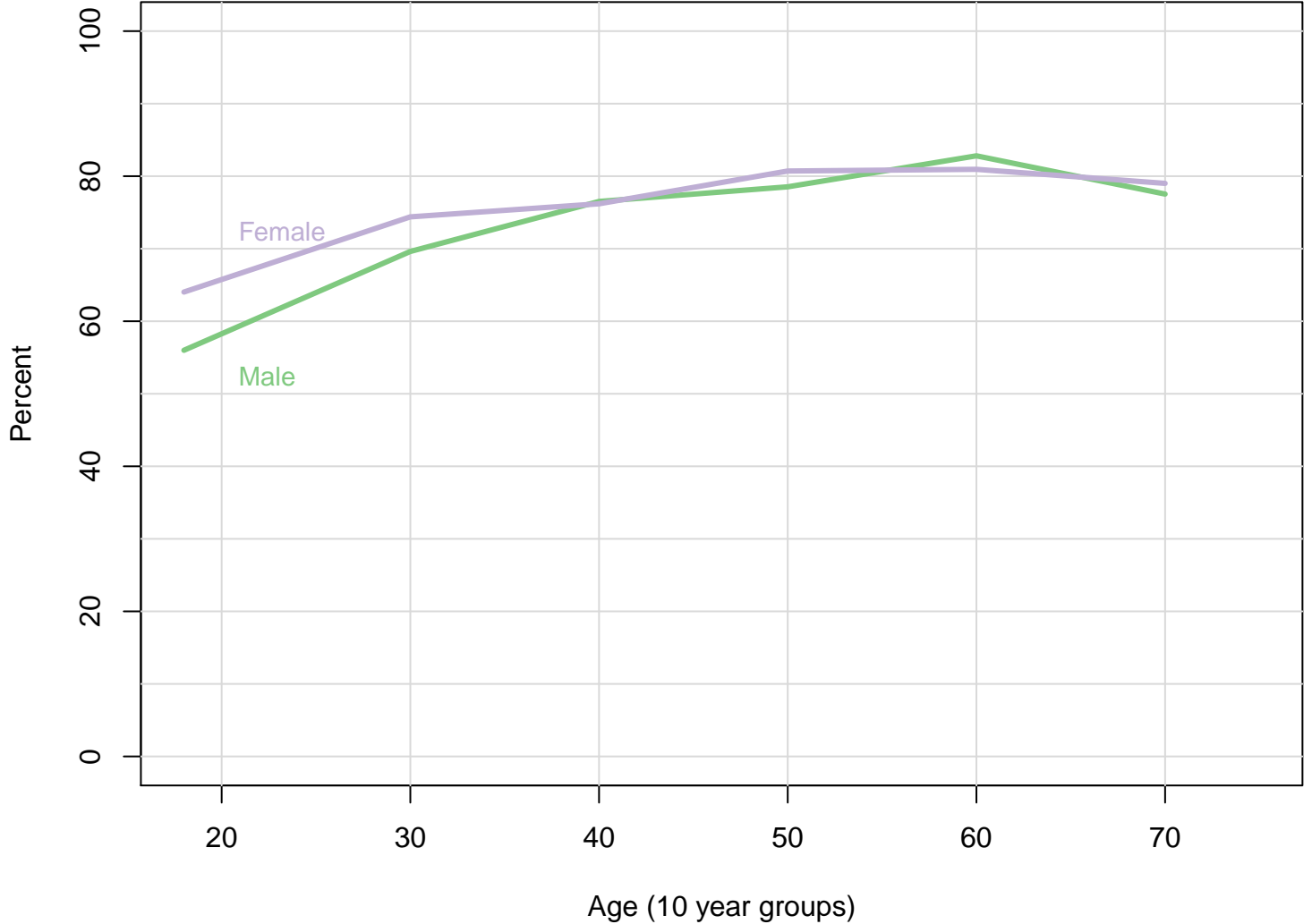
Vote by Age and Sex, 2004–2012

National, Presidential Years



Vote by Age and Sex, 2004–2012

Wisconsin, Presidential Years



MARQUETTE UNIVERSITY
LAW SCHOOL POLL

